

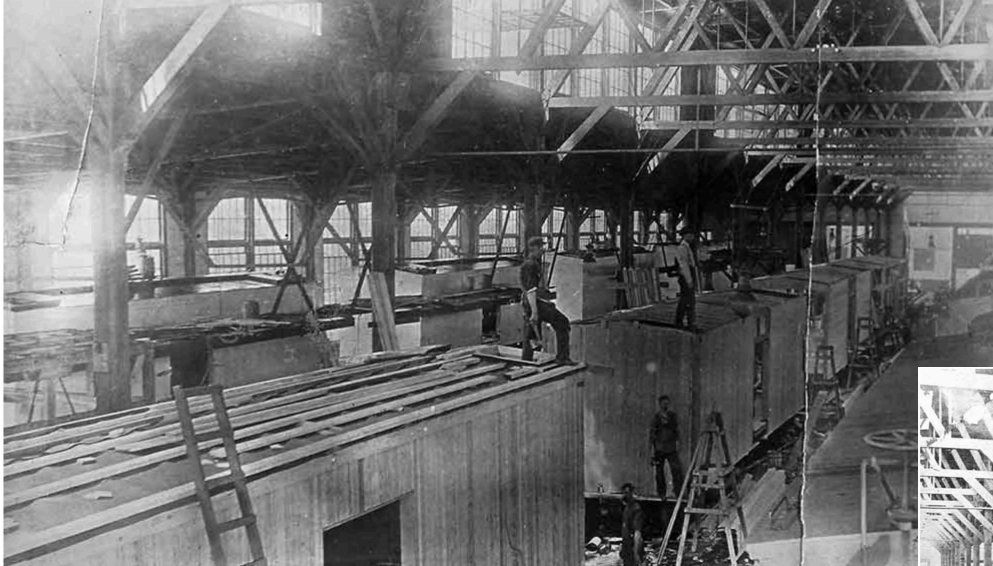
# Manufacturing Rail Cars

## Refrigerated Rail Car Inquiry Unit

Merchants Despatch Transportation Company (MTD) built and leased refrigerator freight cars. MTD, referred to as "the Carshops," operated a manufacturing plant in Despatch, New York. The first rail car rolled from this plant in 1898 and the planned village grew rapidly in the early 20th century. In 1906, Despatch was renamed East Rochester.

Visit Source: [http://www.erhistory.com/image\\_library.php?cat=125](http://www.erhistory.com/image_library.php?cat=125)

"History of East Rochester," East Rochester Historical Society. Accessed 10 Jan. 2018.



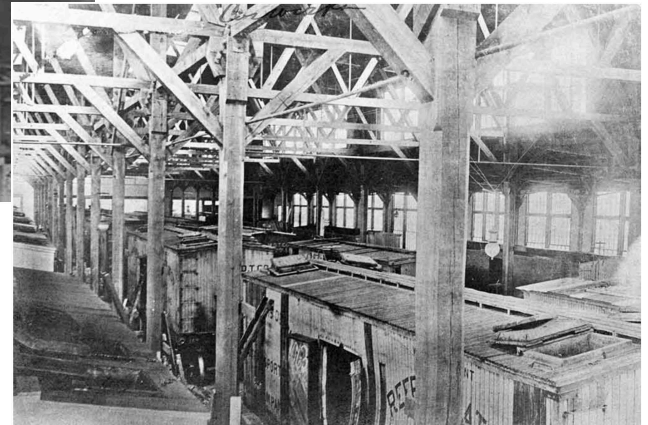
Construction of Wooden Cars - Image #44

Additional Resource about the MTD Company:

"The East Rochester Despatch Car Shops: A History in Pictures."

Rochester & Genesee Valley Railroad Museum. Industry Depot, 282 Rush Scottsville Rd., Rush, NY, 14543. Accessed 10 Jan. 2018.

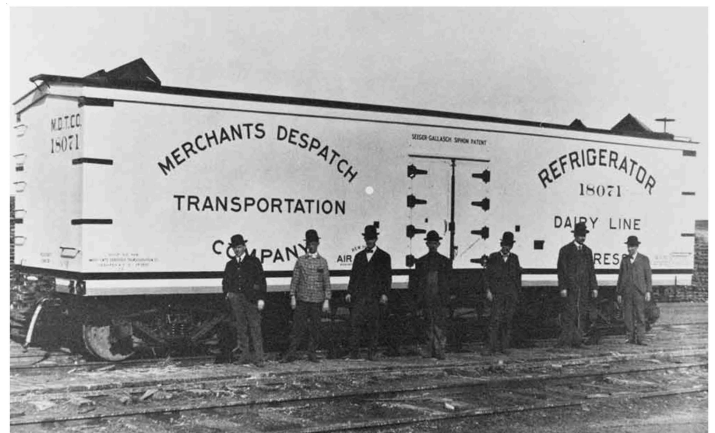
<http://www.rgvrrm.org/about/railroad/mdt14053/>



Manufacturing Plant, Interior View - Image #228



Early Hand-colored Photo - MDT Company, Refrigerator Cars - Image #128



Refrigerator Cars (Early Model) - Image # 90

Source (photographs): East Rochester Historical Society. Image Library. Car Shops. See Images #44, #90, #190; #212; and #228. Accessed: 10 Jan. 2018. [http://www.erhistory.com/image\\_library.php?cat=125](http://www.erhistory.com/image_library.php?cat=125)



Long Line of Refrigerator Cars in the West Yard - Image # 190